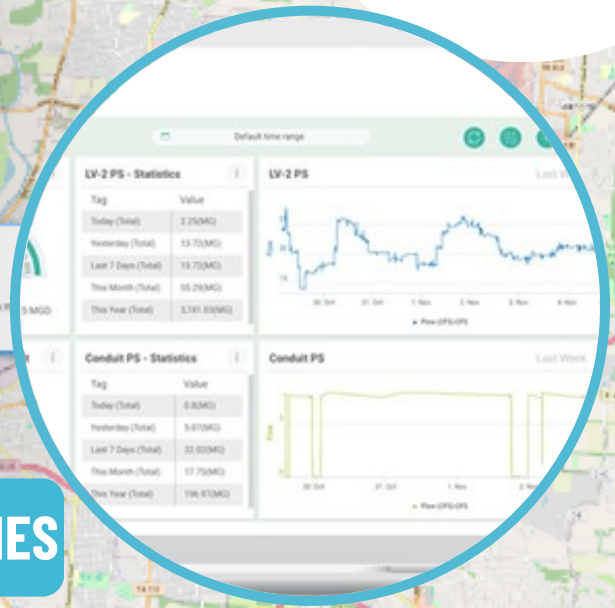


DATA DRIVEN MANAGEMENT & AI SOLUTIONS

FOR WATER & WASTEWATER UTILITIES



IOSight is an innovator and a market leader in the field of data management and analytics, specializing in the water and wastewater treatment sector.

IOSight provides cost-effective, user-friendly solutions for water and energy infrastructure facilities, reducing costs, improving efficiency, increasing productivity, saving energy, and delivering regulatory compliance.

We provide robust, reliable, and flexible solutions enabling practical data-driven management.

Water and Wastewater Utility managers and operators can get actionable, accurate, comprehensive, real-time insights into their site performance, as well as advanced decision-support solutions such as anomaly detection, early fault prediction, and optimization of operations and resources.

IOSight's solutions include the iGreen best-in-class data management and Business Intelligence platform that by utilizing Advanced Analytics, AI, and ML modules, enable clients to analyze existing data to improve performance of the infrastructure and detect abnormalities before they become a problem.

With IOSight you can meet today's challenges through practical data-driven management.

Visualization

Customizable dashboards and reports provide automated real-time data visualization with a variety of graphical representation tools.

Integration

Seamless viewing of integrated data from multiple sources, including SCADA, Historian, AMI, GIS, CMMS, Laboratories, IoT, manual inputs, files, and more. This unified access ensures comprehensive data visualization and analysis across all operational areas.

Access data securely from any device anytime anywhere

Ensure seamless collaboration across teams with role-based access controls and stay updated with real-time mobile notifications.

Operational efficiency

Optimization of energy and chemical consumption at WTPs and WWTPs leading to cost savings.

Asset performance & Maintenance

Data-driven asset monitoring and early fault detection (predictive maintenance).

Seamless Implementation

A unique methodology designed to simplify the implementation process.